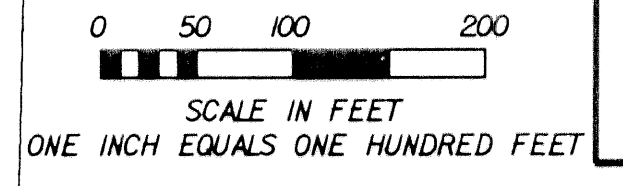
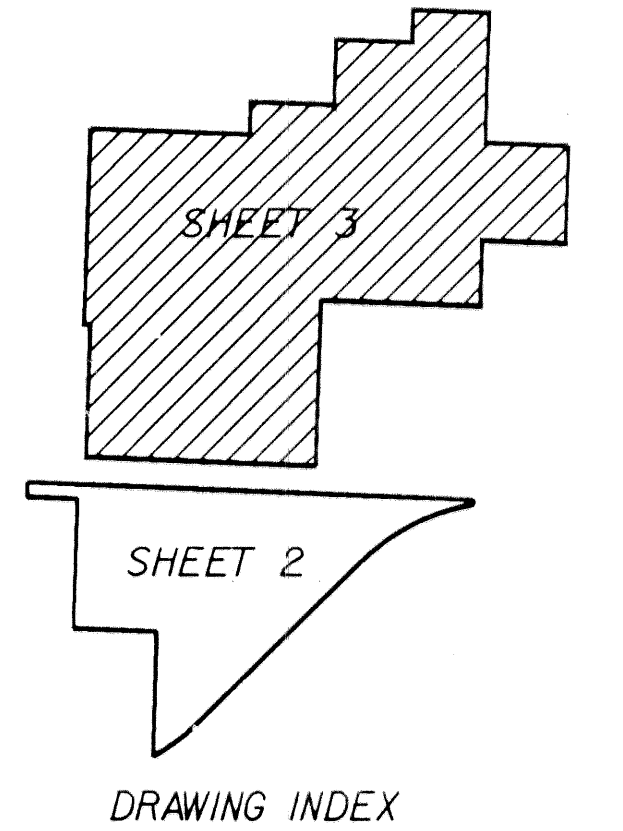


N.E. CORNER SECTION 30
FOUND PALM BEACH COUNTY DISK



PALM BEACH COMMUNITY COLLEGE

NOTE:
30' PLATTED ROADWAYS AS SHOWN ON THE PALM BEACH FARMS CO. PLAT NO. 7 WITHIN THIS PROJECT AREA WERE ABANDONED PER RESOLUTION NO. R-83-1592 AS FILED IN O.R.B. 4134, PAGE 1182.
RELEASES FOR SAID 30' PLATTED ROADWAYS WERE ALSO OBTAINED FROM LAKE WORTH DRAINAGE DISTRICT AND FILED IN O.R.B. 11041, PAGE 1035 AND IN O.R.B. 12129, PAGE 1533.

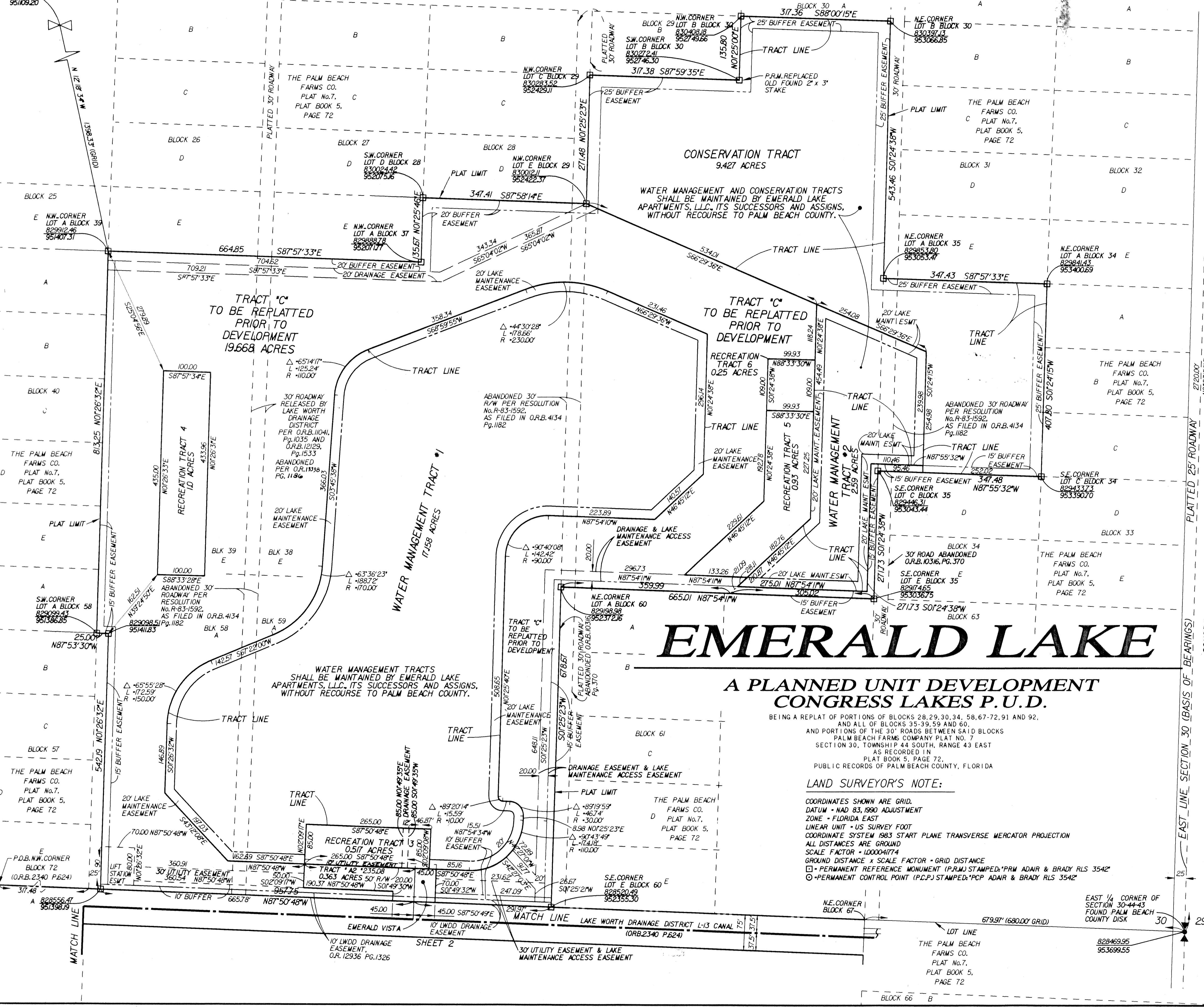


07.13.001

NORTH QUARTER CORNER SECTION 30
FOUND PALM BEACH COUNTY DISK
83127864
9510920

12/17/01 10:05:55 AM P:\DRAWINGS\LDK\BOYLAKES\PLAT2.DGN

SUBDIVISION EMERALD LAKE
BOOK 94 PAGE 82
FLOOD MAP # 175 B
ZONING PUD
QUAD # 18
SE
TAZ 262
PUD NAME CONGRESS LAKES



EMERALD LAKE

A PLANNED UNIT DEVELOPMENT CONGRESS LAKES P.U.D.

BEING A REPLAT OF PORTIONS OF BLOCKS 28, 29, 30, 34, 58, 67, 72, 91 AND 92,
AND ALL OF BLOCKS 35, 39, 59 AND 60,
AND PORTIONS OF THE 30' ROADS BETWEEN SAID BLOCKS
PALM BEACH FARMS COMPANY PLAT NO. 7
SECTION 30, TOWNSHIP 44 SOUTH, RANGE 43 EAST
AS RECORDED IN
PLAT BOOK 5, PAGE 72,
PUBLIC RECORDS OF PALM BEACH COUNTY, FLORIDA

LAND SURVEYOR'S NOTE:

COORDINATES SHOWN ARE GRID.
DATUM - NAD 83, 1990 ADJUSTMENT
ZONE - FLORIDA EAST
LINEAR UNIT - US SURVEY FOOT
COORDINATE SYSTEM 1983 START PLANE TRANSVERSE MERCATOR PROJECTION
ALL DISTANCES ARE GROUND
SCALE FACTOR = 1.00004174
GROUND DISTANCE X SCALE FACTOR = GRID DISTANCE
[] - PERMANENT REFERENCE MONUMENT (P.R.M.) STAMPED: "P.R.M. ADAIR & BRADY RLS 3542"
[] - PERMANENT CONTROL POINT (P.C.P.) STAMPED: "P.C.P. ADAIR & BRADY RLS 3542"

EAST 1/4 CORNER OF
SECTION 30-44-43
FOUND PALM BEACH
COUNTY DISK



ADAIR & BRADY, INC.
CONSULTING ENGINEERS • LAND SURVEYORS • LAND PLANNERS
1958 SOUTH CONGRESS AVENUE
WEST PALM BEACH, FLORIDA 33406
(561) 964-1221